

SOUTHWEST MANITOBA

VISITOR'S GUIDE 2026

MANITOBA
CANADA'S HEART IS CALLING



**TOURISM
WESTMAN**



ONE
IDEA
AT A
TIME



Building Diversified Communities

Offering You Services For All Business & Community Development. Special Programs For Disabilities With Financial Assistance For All Entrepreneurs.

Community 
Futures Westman

Canada



Prairies Economic
Development Canada

Développement économique
Canada pour les Prairies

cfwestman.ca

Follow your *heart* to Southwest Manitoba

Endless skies, golden fields, and sunsets that stop you in your tracks.

Stretching from Riding Mountain to Turtle Mountain, Southwest Manitoba offers an incredible mix of landscapes, from farmland and freshwater lakes to valleys, wide-open views, and unique desert-like terrain. It's a destination shaped not only by its scenery, but by the warmth and hospitality of the people who call it home.

Table of Contents

04 TAKE THE SCENIC ROUTE
OUR COMMUNITIES

06 FAIRS & FESTIVALS
LOCAL EVENTS

10 LAKES & BEACHES
BEST SPOTS TO COOL OFF

14 STAR ATTRACTIONS
BUCKET LIST ITEMS

18 REST & RELAXATION
SAY SPAAAH

20 THE GREAT OUTDOORS
PROVINCIAL/NATIONAL PARKS

24 INDIGENOUS TOURISM
WHERE STORIES LIVE ON

26 CAMPING
GET AWAY FROM IT ALL

30 A TASTE OF WESTMAN
LOCAL BITES

32 ARTS & CULTURE
GET INSPIRED

36 STAY FOR A WHILE
MAKE YOURSELF AT HOME

42 FAMILY TIME
ADVENTURE FOR ALL AGES

44 LET IT SNOW
WINTER IN WESTMAN

48 MUSEUMS
EXPLORE THE PAST

50 TREAT YOURSELF
SHOPPING

52 STEP INTO NATURE
SCENIC TRAILS

56 HIT THE LINKS
GOLFING

60 SOUTHWEST MAP
FOLLOW YOUR HEART



**TOURISM
WESTMAN**

PO Box 20037, RPO Brandon South
Brandon, MB, R7A 6Y8
Telephone: (204) 254-6580
Toll-Free: 1-844-475-0908
E-mail: info@tourismwestman.ca
Website: tourismwestman.ca

Tourism Westman recognizes that this region is located on Treaty 1 and Treaty 2 Territories, and on the traditional lands of the Anishinaabe, Cree, Oji-Cree, Dene and Dakota Nations, as well as the homeland of the Métis Nation.

This acknowledgment reflects an ongoing responsibility to honour and respect Indigenous communities.

© Tourism Westman. All rights reserved. No portion of this publication may be reproduced, in whole or in part, without the express written permission of the publisher. The publisher makes no warranties for the products or services advertised in Manitoba's Southwest Travel Guide, and appearance of said ads should not be considered an endorsement. The publisher and Tourism Westman will not be responsible for injury, loss or damages which result from readers' participation in any event or activity featured in this publication. Information in this guide is taken from a number of sources, believed to be correct at the time of publication; however, a business or organization may change or cease operations, and events listed in the guide may be cancelled or rescheduled. Users of the guide are encouraged to make full use of the contacts provided in order to verify information.

Boundary Trail

BOISSEVAIN

- boissevain.ca
- 204-534-2433

CARTWRIGHT-ROBLIN MUNICIPALITY

- cartwrightroblin.ca
- 204-529-2307

DELORAINÉ

- delowin.ca
- 204-747-3668

KILLARNEY

- killarney.ca
- 204-523-7247

MELITA

- melitamb.ca
- 204-522-3413

RM OF LOUISE

- louisemb.com
- 204-873-2591

WASKADA

- waskada.org
- 204-673-2401

Red Coat Trail

BALDUR

- townofbaldur.ca
- 204-535-2176

GLENBORO

- glenboro.com
- 204-827-2575

HARTNEY & MUNICIPALITY OF GRASSLAND

- grasslandmunicipality.ca
- 204-858-2536

RESTON

- rmofpipestone.com
- 204-877-3327

RM OF PRAIRIE LAKES

- rmofprairielakes.ca
- 204-537-2241

SOURIS

- sourismanitoba.com
- 204-741-0631

OAKLAND-WAWANESA MUNICIPALITY

- oakland-wawanesa.ca
- 204-824-2666

Trans Canada Highway

AUSTIN

- northnorfolk.ca
- 204-872-3815

CARBERRY & THE RM OF NORTH CYPRESS-LANGFORD

- townofcarberrycanada.ca
- 204-834-6600



*Take the
Scenic Route*

ELKHORN

- elkhorn.mb.ca
- 204-845-2161

HAMIOTA

- hamiota.com
- 204-764-3050

KENTON

- wallace-woodworth.com
- 204-748-1239

MACGREGOR

- northnorfolk.ca
- 204-685-2211

MINIOTA

- myprairieview.ca
- 204-567-3683

OAK LAKE

- rmofsifton.com
- 204-855-2423

RAPID CITY

- rapidcitymb.ca
- 204-826-2515

RIVERS

- riversdaly.ca
- 204-328-5300

RM OF OAKVIEW

- rmfoakview.ca
- 204-566-2146

RM OF SIFTON

- rmofsifton.com
- 204-855-2423

VIRDEN

- virden.ca
- 204-748-2440

Yellowhead Highway

BIRTLE

- myprairieview.ca
- 204-842-3403

GLADSTONE

- westlake-gladstone.ca
- 204-385-2332

MINNEDOSA

- minnedosa.com
- 204-867-2727

NEEPAWA

- neepawa.ca
- 204-476-7600

YELLOWHEAD MUNICIPALITY

- yellowheadmunicipality.ca
- 204-759-2565

SANDY LAKE

- sandylakemanitoba.com
- 204-848-7614

City of Brandon

BRANDON

- brandontourism.com
- 204-729-2141

 Boissevain
Credit: Travel Manitoba

For a more detailed look at **our communities**, view the map of Manitoba's Southwest on the inside back cover.

Fairs & Festivals

Scan QR code
for more
local events!



SCAN ME



Westman Multicultural Festival, Brandon
Credit: Brandon Sun

The Westman Multicultural Festival is a lively three-day winter celebration in Brandon that brings cultures from around the world together in one unforgettable experience. Through a series of pavilions representing countries across the globe, visitors can enjoy traditional music, dance, authentic cuisine, art, and live performances while discovering the rich diversity that makes the community so vibrant.

EXPERIENCE THE EXCITEMENT

WHERE COMMUNITY AND CELEBRATION
COME TOGETHER

Throughout the year, live entertainment and events bring communities to life - from agricultural fairs and hometown celebrations to an expanding lineup of summer music festivals with something for every taste. Across the region, visitors can experience everything from rodeos, cultural festivals, and artisan markets to family-friendly gatherings, sporting events, and seasonal celebrations that showcase the welcoming spirit and vibrant character of Southwest Manitoba.



Music in the Park, Brandon

Welcome to the RM OF PRAIRIE LAKES

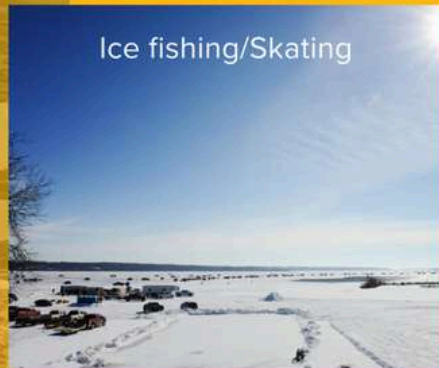
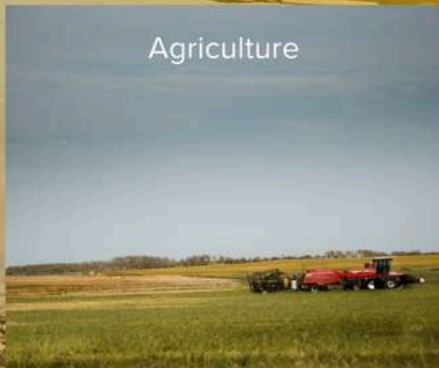
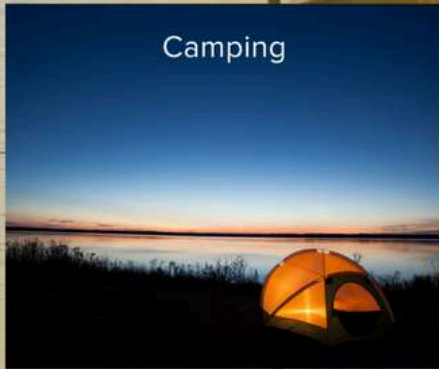
Explore over 50km of shore on Southwest
Manitoba's Largest Navigable Lake



Come for the day... Stay for a Lifetime



For more information visit
www.rmofprairielakes.ca



Gateway to Opportunity, Cottage Country & Rural Lifestyle

Lakes & Beaches

William Lake is a hidden gem in Southwest Manitoba, offering visitors a peaceful escape surrounded by scenic prairie landscapes and tranquil waters. Popular for swimming, boating, fishing, camping, and relaxing lakeside getaways, the area is the perfect destination for those looking to slow down and enjoy the outdoors. Whether you're spending a sunny summer afternoon on the beach, watching the sunset over the water, or gathering around a campfire under the stars, William Lake provides plenty of space to unwind and reconnect with nature..



Scan QR code
for more spots
to cool off!

 William Lake,
Turtle Mountain
Provincial Park

TOP PICKS

- Minnedosa Beach
- Birtle Beach
- Pelican Lake, Belmont
- William Lake, Turtle Mountain Provincial Park
- Clear Lake, Wasagaming
- Killarney Beach
- Lake Wahtopanah, Rivers
- Oak Lake Beach

DIVE INTO SUMMER

SUN, SAND & SUMMER ESCAPES

From relaxing afternoons on sandy shores to swimming, paddling, fishing, and family-friendly fun, the region offers countless ways to cool off and unwind. Whether you're planning a day trip or a weekend getaway, there's sure to be a destination to provide the perfect backdrop for sunny adventures and unforgettable summer memories.



 Killarney Lake



William Lake, Turtle Mountain Provincial Park
Credit: Sandy Black



Scan QR code
for fishing!



Scan QR code
for canoeing &
kayaking!



Minnedosa Lake
Credit: Sandy Black



Offers you a quality lifestyle in a rural setting

Enjoy your choice of lifestyle activities all year round in Hamiota. Whether it's curling or skating at the Hamiota & District Sports Complex, cross country skiing and snowshoeing along our groomed trails, or taking a refreshing swim in the outdoor heated leisure pool, we're sure you'll agree – we're worth the visit.

Summer visitors enjoy golfing, camping, hiking our nature trails and many community events! Our historic Heritage Arts Centre welcomes visitors year round to visit their art gallery. Local business members provide a wide variety of products and services at competitive rates.

Phone (204) 764-3050
www.hamiota.com

*Plan a day or 2 or 3 or...
in Hamiota!*




Star Attractions

The Souris Swinging bridge is Canada's longest historic pedestrian suspension bridge and offers visitors stunning views of the river and surrounding area. It has become both a symbol of the community and favourite gathering place for visitors exploring the community. Whether part of a peaceful morning stroll, summer afternoon adventure or at sunset, this Star Attraction delivers a uniquely memorable Manitoba experience.

Scan QR code
for more
Star Attractions!



 Souris Swinging Bridge
Credit: Travel Manitoba

CAN'T MISS STOPS

BE SURE TO SEE OUR STARS

Southwest Manitoba is home to 12 of the Province's 63 Star Attractions! From iconic landmarks and breathtaking natural spaces to unique cultural and recreational experiences, these standout destinations offer unforgettable moments and are must-sees during your visit to the region.

OUR STAR ATTRACTIONS:

- The Commonwealth Air Training Plan Museum, Brandon
- International Peace Garden, Boissevain
- Margaret Laurence Home, Neepawa
- Boissevain Outdoor Art Gallery, Boissevain
- Riverbank Discovery Centre, Brandon
- Royal Canadian Artillery Museum, Shilo
- Souris Swinging Bridge, Souris
- Spruce Woods Provincial Park, Glenboro
- Westman Reptile Gardens, Douglas
- Farmery Estate Brewery, Neepawa
- Manitoba Agricultural Museum, Austin
- Sandhills Casino, Carberry



International Peace Garden, Boissevain
Credit: International Peace Garden

CONNECTING COMMUNITIES

CJRB
Radio 1220

DISCOVER
WESTMAN.COM

GOLDEN WEST

WHERE PEACE, PLANTS AND CANADIANS GROW TOGETHER

Nestled in the Turtle Mountains on the Canadian - U.S. Border, the International Peace Garden is a living symbol of harmony – and a breathtaking place to explore year-round, without leaving Canada.



Discover Peace By the Numbers

- 100,000** annuals and perennials in bloom.
- 2,400** acres of gardens, forest, lakes and trails.
- 5,000+** cacti and succulents in the Conservatory.
- 36** pristine camping sites – May to September.
- 4** cozy cabins – October to May.
- Countless** moments of peace and wonder.

The International Peace Garden – blooming with friendship since 1932.



INTERNATIONAL
PEACE
GARDEN



Check our Calendar of Events

Plan your next visit
peacegarden.com • 1-888-432-6733





Climb to new heights in Neepawa!

Neepawa is not like you remember! Experience our new climbing towers, the HyLife Back Forty Trail Park and Filipino bakeries. Don't miss one of the best golf courses in western Manitoba! Learn more at neepawatourism.ca and follow on Facebook and IG.



discover

Cartwright-Roblin MUNICIPALITY



Community of Mather



Heritage Park Campground

Book at letscamp.ca



Rock Lake Beach,
Campground & Nature Trail



Cartwright Ponderosa Days

August Long Weekend



Badger Creek Museum



Clay Banks Bison Jump



Cartwright Town &
Country Golf Club



Badger Creek Park

NEW

Disc Golf Course
Belgium Bowling Lanes



visit www.cartwrightroblin.com



Scan QR code
for more places
to unwind!

Rest & Relaxation



Klar So Nordic Spa, RMNP
Credit: Travel Manitoba

Klar So Nordic Spa at Elkhorn Resort Spa & Conference Centre offers a peaceful wellness escape surrounded by nature. With outdoor fireplaces, tranquil lounge areas, spa treatments, and scenic views of the surrounding landscape of Riding Mountain National Park, Klar So provides the perfect place to slow down and unwind after a day of exploring.



 The Hills Spa, Brandon
Credit: The Hills Spa

SAY SPAAAAAHH..

SLOW DOWN, RECHARGE AND TAKE TIME FOR YOURSELF

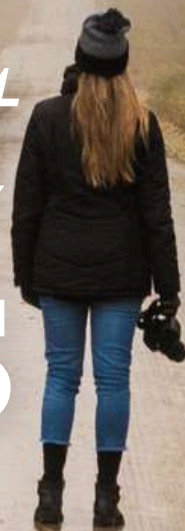
From relaxing spa treatments and wellness experiences to peaceful escapes and day retreats, the region offers the perfect setting to unplug and unwind. Whether you're enjoying a massage after a day of exploring, indulging in a spa getaway with friends, or simply seeking a tranquil place to relax, Southwest Manitoba provides countless ways to refresh both body and mind in every season.



Scan QR code
for more
outdoor adventure!



The Great Outdoors



Riding Mountain National Park
Credit: Travel Manitoba



Spruce Woods Provincial Park, Glenboro
Credit: Travel Manitoba

Riding Mountain National Park is one of Manitoba's most iconic outdoor destinations, offering one of a kind landscapes, abundant wildlife, and year-round adventure in the heart of the province. Spanning forests, rolling hills and lakes, the park is home to endless opportunities for hiking, camping, paddling, wildlife viewing, and exploring nature. Visitors can relax along the shores of Clear Lake, discover scenic trails, or experience the vibrant townsite of Wasagaming with its shops, restaurants, and lakeside atmosphere. Whichever season; RMNP offers unforgettable experiences for travellers seeking connection with nature.

ENDLESS ADVENTURES

ROLLING PRAIRIE LANDSCAPES, SPARKLING LAKES, DENSE FORESTS AND DRAMATIC SAND DUNES

Southwest Manitoba is home to some of the province's most breathtaking natural spaces. Visitors can explore the beauty and adventure found within iconic destinations like Riding Mountain National Park and Spruce Woods Provincial Park, along with a variety of scenic provincial parks, trails, rivers, and recreational areas. Whether hiking, camping, paddling, wildlife watching, or simply taking in the view, the great outdoors offers unforgettable experiences year-round.



Scan QR code
for top
hiking spots!



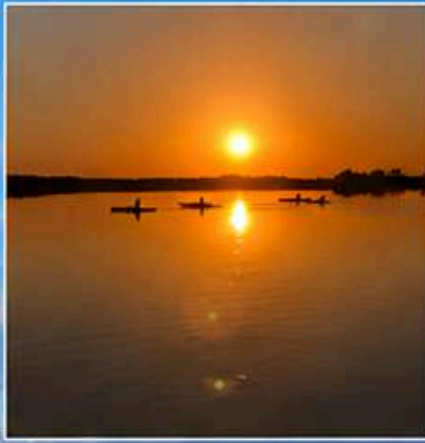
Turtle Mountain Provincial Park, Boissevain
Credit: Travel Manitoba



YELLOWHEAD MUNICIPALITY

WELCOMES YOU





SHOAL LAKE
STRATHCLAIR
OAKBURN
ELPHINSTONE

Slow the hands of time; connect to nature and each other while you experience what the Municipality of Yellowhead has to offer. From family-friendly activities in our many parks (new splash park, bike park, butterfly park, dog park, outdoor pickle ball courts and walking trails) to our lakeside golf course, campgrounds and museums, you are sure to find many ways to relax, have fun and connect with the whole family. A community with the friendliest people you have ever met – We wave!

YELLOWHEADMUNICIPALITY.CA

Indigenous Tourism



Scan QR code
for more
Indigenous Tourism!



SCAN ME

National Indigenous Peoples Day in Brandon is marked with vibrant community celebrations featuring traditional ceremonies, music, dance, storytelling, cultural demonstrations and family-friendly activities. Held annually at the Riverbank Discovery Centre on June 21st, the event creates an opportunity for residents and visitors alike to gather, learn, and celebrate Indigenous culture, heritage, and community spirit in an inclusive and welcoming atmosphere.

CULTURE & CONNECTION

DISCOVER STORIES ROOTED IN THE LAND

Visitors are invited to explore meaningful cultural experiences, authentic storytelling, art, music, and opportunities to learn from Indigenous Peoples whose connections to this land span generations. From cultural events and interpretive experiences, historic sites, and natural spaces of significance, Indigenous tourism offers a deeper understanding of the people, traditions, and stories that are woven into the heart of Westman.

Tipi Tours Legacy Project, Brandon
Credit: The Brandon Sun



Wakpa Tanka Lookout,
Miniota



Scan QR code
for more
camp spots!




Camping



WIDE OPEN SPACES

MAKE MEMORIES AROUND THE CAMPFIRE

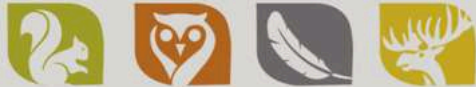
Whether you prefer pitching a tent beneath the stars, parking the RV near the water, or cozying up in a rustic cabin, the region's parks and campgrounds provide the perfect base for outdoor adventure and relaxation. Spend your days hiking, swimming, fishing, paddling, and exploring nature, then unwind around the campfire as the prairie sunsets give way to unforgettable star-filled skies.



Set along the river valley near the community of Rivers, Rivers Provincial Park is known for its relaxed atmosphere, open green spaces, and opportunities for camping, picnicking, and enjoying the outdoors. Perfect for gathering with family, exploring the area, or simply unwinding in nature; this park provides a simple, scenic escape perfect for reconnecting with nature and enjoying the slower pace of prairie life.



A Peaceful Prairie *escape*



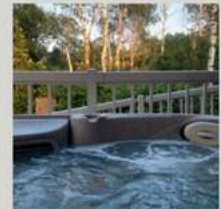
FOREST HILLS

CABINS, RV PARK & MEETING CENTRE

CARBERRY, MB

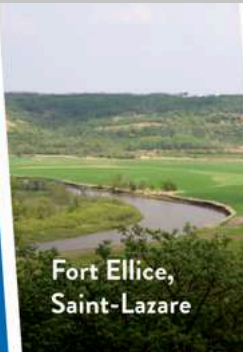
foresthillsresort.ca/1.204.834.2421/cabin.rv@slfn293.ca

- ✓ Air-conditioned cabins with BBQ/hot tub/WIFI/firepit
- ✓ Well-treed camp sites with electrical and water hookups
- ✓ Full Service Meeting & Group Facilities
- ✓ Proudly owned & operated by Swan Lake First Nation
- ✓ Conveniently located by Spruce Woods Provincial Park and Sand Hills Casino



BIENVENUE!

Discover the joie de vivre and big hearts of Manitoba's rural Francophone and Métis communities



Fort Ellice,
Saint-Lazare



bonjour
MANITOBA
bonjour.MANITOBA.com

Aspen Grove CAMPGROUND

1.204.855.2260

Oak Lake, Mb

www.aspengrovecampground.ca | aspengrovecampground@gmail.com



Heated Outdoor Pool



Mini Golf Course



Full Service Sites

Experience a Manitoba Summer!

Located on the TransCanadaHwy, 14 kms east of Virden, 9kms West of Oak Lake.





SWIM * KAYAK * GOLF * CAMPING * SHOP * SPLASH PARK * TRAILS * STAY * RECREATION * HIKING * CONCERTS * DINE




killarney
lakeside golf club

Hidden Jewel of the South

Located in southwest Manitoba along the shores of Killarney Lake, our 18 hole golf course will provide a challenge for all level of golfers.

- driving range
- golf car rentals
- club rentals
- pro shop
- licensed restaurant
- walk-ups welcome
- tournament and group bookings available

To book a tee time call (204) 523-8277 and visit us at www.killarneylakeside.com

Celebrating 100 years




Pleasant Valley
GOLF CLUB
Nothing quite like it!

Pleasant Valley Golf Club is a family owned and operated golf course. Nestled in the Scenic Pembina Valley at the south end of Pelican Lake, this 18 hole course offers a challenge for all



- Large greens cut into hill sides
- 9 hole putting green
- A winding creek, tree lined fairways
- 125 ft elevation difference between nines
- 40 golf car rentals
- Club rentals
- Licensed clubhouse and restaurant
- Only 20 minutes from Killarney!



Corporate and Group Bookings Welcome.

To Book Tee Times in Advance Call: (204) 537-2487 Visit us at www.pleasantvalleygolfclub.ca

Minutes Apart, But Hours of Fun. Discover These Two Well-Groomed Championship Courses In Southwestern Manitoba.

A Taste of Westman



BlackWheat Brewing, Brandon
Credit: Travel Manitoba

Black Wheat Brewing has become a favourite gathering place in Brandon, offering locally crafted beer, a welcoming atmosphere, and a true taste of Southwest Manitoba's growing craft beverage scene. As Brandon's first microbrewery, Black Wheat Brewing combines small-town hospitality with creative, handcrafted brews inspired by the region and its community. Visitors can enjoy a rotating selection of locally made beers, from crisp lagers and refreshing ales to bold seasonal creations.



Scan QR code
for more
tasty spots!

BAKERY PICKS:

- Chez Angela Bakery & Cafe, Brandon
- Minary Homestyle Bakery, Souris
- Boissevain Bakeshop
- Country Crocus Bakeshop, Hamiota
- The Sweet Spot Bakery, Virden
- Lola's Bakery, Neepawa



Scan QR code for more info on these bakeries!

 Chez Angela, Brandon
Credit: Travel Manitoba

GRAB A BITE

Scan QR code for roadtrips built around droolworthy drive-ins!



Southwest Manitoba is full of flavour, offering a welcoming mix of locally inspired cuisine, homegrown ingredients, and small-town culinary charm.

From cozy cafés and bakeries to family-run restaurants, farmers' markets, and seasonal food events, the region invites visitors to experience authentic prairie hospitality one bite at a time. Whether you're enjoying fresh-baked goods, hearty comfort food, or locally sourced dishes that reflect the land itself, every stop offers a true taste of Westman: simple, satisfying, and full of character.



Woodfire Deli, Souris
Credit: Travel Manitoba

Scan QR code
for more art spaces!



Arts & Culture



Art Gallery of SW MB, Brandon
Credit: Sandy Black

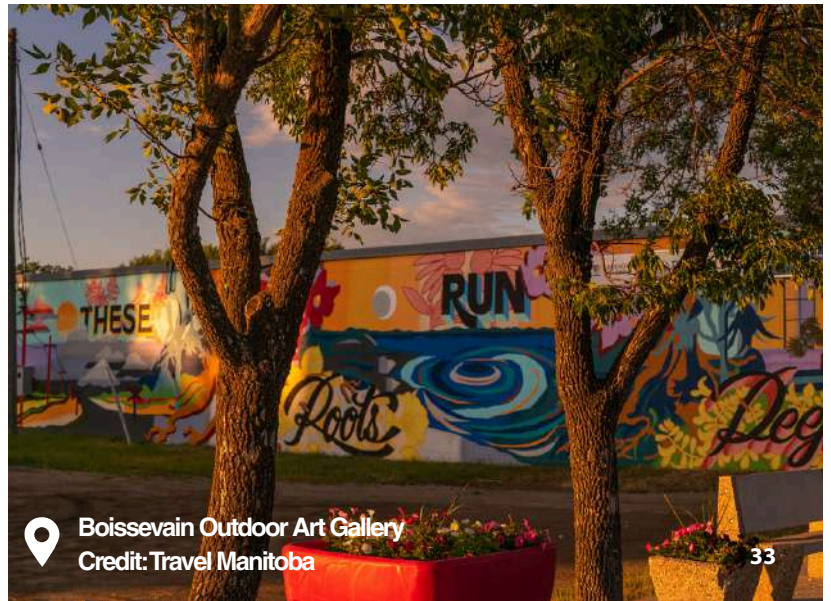
CREATIVITY LIVES HERE

Southwest Manitoba's arts and culture scene is brimming with creativity, community, and experiences that celebrate the spirit of the region.

From galleries, museums, and public art to live theatre, music, festivals, and cultural events, visitors can discover a vibrant mix of artistic expression and local heritage throughout Westman. Whether you're exploring historic sites, attending a performance, browsing local artisan shops, or connecting through cultural celebrations, the region offers countless opportunities to experience the stories, talent, and traditions that make us unique.



The Art Gallery of Southwestern Manitoba is a vibrant cultural destination in the heart of Brandon, showcasing contemporary and regional art through engaging exhibitions, programs, and community experiences. Featuring works by local, national, and Indigenous artists, the gallery offers visitors an inspiring space to explore creativity, culture, and storytelling through a wide range of artistic mediums. With rotating exhibits, workshops, public events, and a welcoming atmosphere, this gallery is a must-visit destination for art lovers and curious explorers alike.



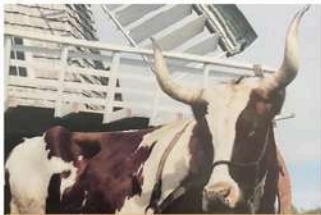
Boissevain Outdoor Art Gallery
Credit: Travel Manitoba

RM of Sifton

Welcome home. Welcome to Sifton.



Where Prairie Beauty Meets Adventure



Isaac the Ox- The Heart of Oak Lake



Snowmobile Trails, Cross Country Skiing



Oak Lake Beach- Swim, Boat, Fish



Oak Island Resort- Camping, Golf



Oak Lake Golf Club



Oak Lake & District Arena



Sandhills- Atv'ing, Hiking, Nature



Deleau-Sifton Cenntenial Park



Churches and Garden Parks



Oak Lake Agriculture Fair & Parade



Historic Buildings & Museums



Accomidations: Air B&B's



Brandon
brings you back.



It's the uniqueness that
Brandon provides –
that sense of belonging
– that has people
returning to the city
time and time again.



Install our app and
explore our city today!
brandontourism.com

Welcome to
your home
away from home!



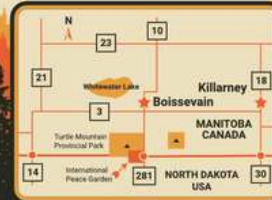
BOISSEVAIN

204-534-7155
306 Mountain St.

KILLARNEY

204-523-4111
220 Geates St. W

Experience
warm hospitality
in clean,
comfortable &
truly unique
accommodations

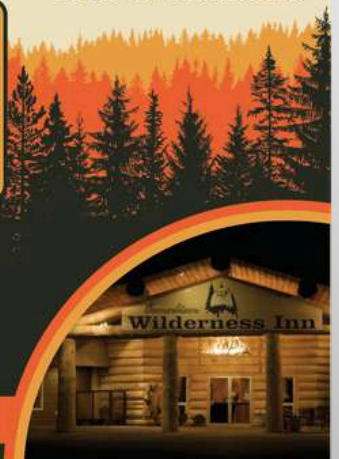


"Very friendly, helpful, professional courteous staff and owner. Rooms were clean. Linens all smelled great. Very detailed. Best value and quality I've had. My overall experience was second to none."



Call today
for reservations

www.CanadianWildernessInn.com



MUNICIPALITY OF
PIPESTONE

Full Service Campgrounds - 9-hole Golf Course &
Clubhouse - Paddle Board Rentals
Spray Park & Waterslide - Lake & Beach Area
Volleyball Court - Walking Trails

Reston, Manitoba www.rmofpipestone.com 204-877-3327

Stay For a While

📍 Moonlit Canopy, Belmont
Credit: Travel Manitoba



Scan QR code
for more
unique stays!



Moonlit Canopy offers a one-of-a-kind glamping experience, combining the beauty of nature with the comforts of luxury accommodations. Nestled near Pelican Lake, the geodesic dome retreats invite guests to relax beneath star-filled skies while enjoying modern comforts like cozy beds, private hot tubs, kitchenettes, and panoramic views of the surrounding landscape.



**Scan QR code
for top
Winter getaway
spots!**

ESCAPE THE ORDINARY

Southwest Manitoba offers a wide variety of comfortable accommodations and unique places to stay

From modern hotels and charming inns to lakeside cabins, cozy cottages, boutique stays, and scenic campground retreats, the region has options for every style of traveller. Wake up to prairie sunrises, unwind beside the lake, or settle into a welcoming small-town stay after a day of exploring. No matter the season, Southwest Manitoba invites you to slow down, stay awhile, and make yourself at home.



 Turtle Village, RMNP
Credit: Travel Manitoba

Scan QR code
for Hotels
& Motels!



Scan QR code
for B&B's!



**THIS
IS WHAT
YOU
HAVE
BEEN
MISSING**

**Lakeside mornings
Trail-filled afternoons
Evenings that linger**

**Minnedosa invites you to step away from
the noise and into something simpler.**

**Paddle across still waters. Wander valley
trails, take in a round of golf, sit around a
campfire and catch up with your people.**

Stay a little longer than planned.

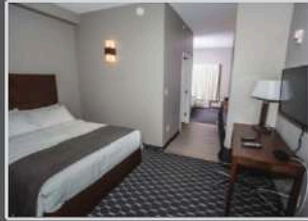
exploreminnedosa.ca



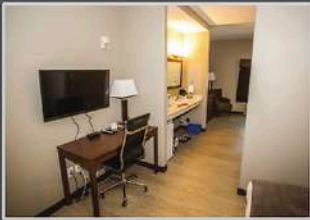
Souris Hotel



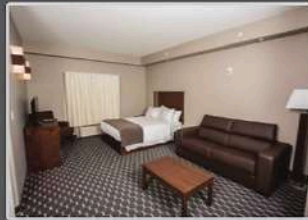
29
Rooms



2 Queen
Standard Room



Pet Friendly
Room



Executive
Suite

Ammenities include:

- Fridge
- Microwaves
- Keurig Coffee Maker
- Breakfast
- Elevator
- 2 TV's

GM: Darlene Janssen

tel : 204-483-3373

gmsourishotel@gmail.com

www.thesourishotel.com



artful
SHOPPING
lovely
LUNCHES
friday
LIVE MUSIC

BRANDON • (204)725-4181
LADYOFTHELAKE.CA

*a great base for
your outdoor
adventures!*



LAKE METIGOSHE

- Cabin Rentals
- Velvet Antler Cafe
- Convenience Store
- Liquor/Beer Vendor

Experience the call of the wild!

www.tmresort.ca

204-747-3919

reservations@tmresort.ca



Municipality of
**NORTH
NORFOLK**



9-Hole Golf Course (MacGregor)

Several Campgrounds

July 1st Celebrations (Austin)

MacGregor Fair
(Last Weekend in June)

Splash Park (MacGregor)

Hockey & Curling (Winter)

www.northnorfolk.ca

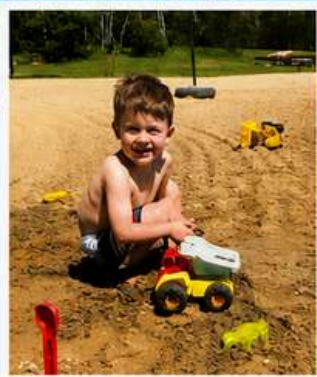
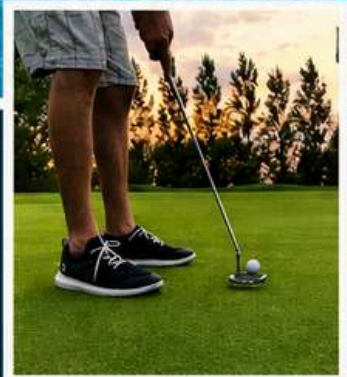


Make a
splash
in Boissevain



WWW.BOISSEVAIN.CA

phone 204-534-2433 email info@boissevain.ca






Scan QR code
for more
family fun!



Family Time

 T-Birds Food Fun Games, Brandon
Credit: Travel Manitoba

LET THE FUN BEGIN

PLAY YOUR WAY THROUGH WESTMAN

Spend the day exploring wide-open spaces, splashing into water-filled adventures, discovering local museums and attractions, or enjoying festivals and community events that bring towns to life. Whether you're planning a weekend getaway, a summer road trip, or a spontaneous day of fun, families of all ages will find plenty of ways to laugh, learn, play, and make lasting memories together across the region.



T-Birds Food Fun Games is Brandon's go-to destination for all-ages entertainment, combining bowling, arcade games, delicious eats, and family fun all under one roof. From glow bowling and classic arcade favourites to pizza, burgers, and friendly competition, it's the perfect place for birthday parties, rainy-day adventures, family outings, or a fun night out with friends.



 Riverbend Park, Neepawa
Credit: Sandy Black

Let It Snow

Scan QR code
for more
Winter activities!



EMBRACE THE SEASON

WESTMAN OFFERS PLENTY OF WAYS TO ENJOY THE SNOWY MONTHS

Winter transforms Spruce Woods Provincial Park into a peaceful prairie escape, where snow-covered trails, rolling sand dunes, and towering spruce forests create a stunning cold-weather landscape.

Whether you're cross-country skiing, snowshoeing, hiking, or simply soaking in the quiet beauty of the season, the park offers endless opportunities for outdoor adventure and cozy winter moments. Crisp air, star-filled skies, and untouched natural scenery make Spruce Woods a magical destination for those looking to embrace Winter.

Visitors can explore snowshoeing and cross-country ski trails, go skating under open skies, experience local winter festivals, or simply warm up with great food, shopping, and hospitality after a day outdoors. Whether you're seeking quiet winter beauty or active seasonal fun, Southwest Manitoba delivers memorable winter experiences in every direction.



Rivers Ice Fishing
Credit: Aurora J Anderson



Deloraine
Winchester
delowin.ca

skating.golf.swimming.camping.fishing.ice fishing.hiking.summer fair.lakes

WELCOME TO WESTMAN!



 **GRANT JACKSON**

MP | BRANDON—SOURIS

GRANT.JACKSON@PARL.GC.CA
GRANTJACKSON.CA
204-282-0707

 **SUPER THRIFTY**
WE CARE... Your Family Drug Store
www.superthrifty.com

- ✓ board games
- ✓ cards & gift cards
- ✓ giftware & toys
- ✓ women's fashions
- ✓ children's clothing
- ✓ health & beauty
- ✓ pharmacy

OPEN

Monday to Friday
9:00am to 5:30pm

Saturday
10:00am to 3:00pm
(store front only)

FIND US AT www.superthrifty.com

Hamiota, Manitoba 204-764-2140

**R**IVERDALE
municipality
RIVERS, MB.

Trails • Parks • Lake/Beach • Golf Course
Fishing Derbies • Provincial Park
Recreation Facilities • Boating/Water Sports
• Fully Accessible Dock

Live, work, play and grow with us!

For more information contact The Municipal Office 204.328.5300
Email admin@riverdalemb.ca or visit us at www.riversdaly.ca

Protect Manitoba's trees.
Don't move firewood.

EMERALD ASH
BORERS ARE
A THREAT!



Invasive species threaten Manitoba's trees. The emerald ash borer and other insects live in firewood. When firewood is moved between locations, so are the insects.



One log can kill a million trees.

Learn more at:
Manitoba.ca/stophespread

Manitoba 



SCAN ME

Scan QR code
for more
Museums!



Museums



Commonwealth Air Training Plan Museum, Brandon
Credit: Travel Manitoba

A JOURNEY THROUGH TIME

STEP INTO THE STORIES OF SOUTHWEST MANITOBA

Discover an important piece of Canadian aviation and military history at the Commonwealth Air Training Plan Museum just minutes from the City of Brandon. Home to restored vintage aircraft, fascinating artifacts, and inspiring stories from the Second World War, the museum honours the legacy of the British Commonwealth Air Training Plan and the thousands who trained across the Prairies. Visitors can explore interactive exhibits, get up close to historic planes, and experience the courage, innovation, and community spirit that helped shape a generation.

Explore the past through fascinating museums that bring the region's history, culture, and heritage to life. From pioneer artifacts and railway history to agricultural roots, local art, and interactive exhibits, museums across the region offer something for curious visitors of all ages. Whether you're exploring small-town treasures or larger cultural attractions, each stop provides a unique glimpse into the people, places, and moments that helped shape the Prairies.



 MB Antique Automobile Museum, Elkhorn



Scan QR code
for more
local goods!

Treat Yourself



 Poor Michael's Emporium, Onanole
Credit: Travel Manitoba

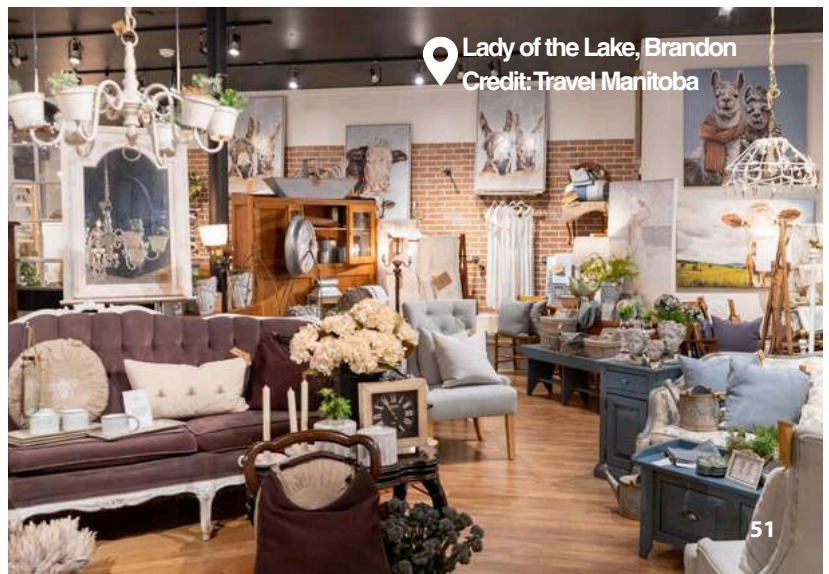
RETAIL THERAPY STARTS HERE

Poor Michael's Emporium is a true hidden gem that blends bookshop charm, cozy café culture, and local artisan shopping all in one inviting space. Housed in a rustic, character-filled building, the emporium offers visitors a relaxed, eclectic atmosphere where you can browse shelves of used and collectible books, discover unique handmade gifts, and enjoy the work of local Manitoba artists.

Alongside its literary treasures, the café is known for its "really good" coffee, homemade baking, and light meals that make it the perfect stop after a day of exploring the park or nearby trails.

FROM CHARMING MAIN STREETS TO HIDDEN BOUTIQUES AND LOCAL MARKETS, SHOPPING IN WESTMAN IS AN EXPERIENCE FULL OF CHARACTER AND DISCOVERY.

Stroll through welcoming downtowns where independent shops, artisan goods, and one-of-a-kind finds take centre stage. Whether you're searching for handmade gifts, fashion, home décor, or a special souvenir to remember your visit, the region's retailers blend small-town hospitality with unique selection. Shopping here isn't just about what you buy - it's about the stories, connections, and local charm you pick up along the way.





Scan QR code
for more
hiking trails!

Step Into Nature

 Big Valley, RM
of Rosedale

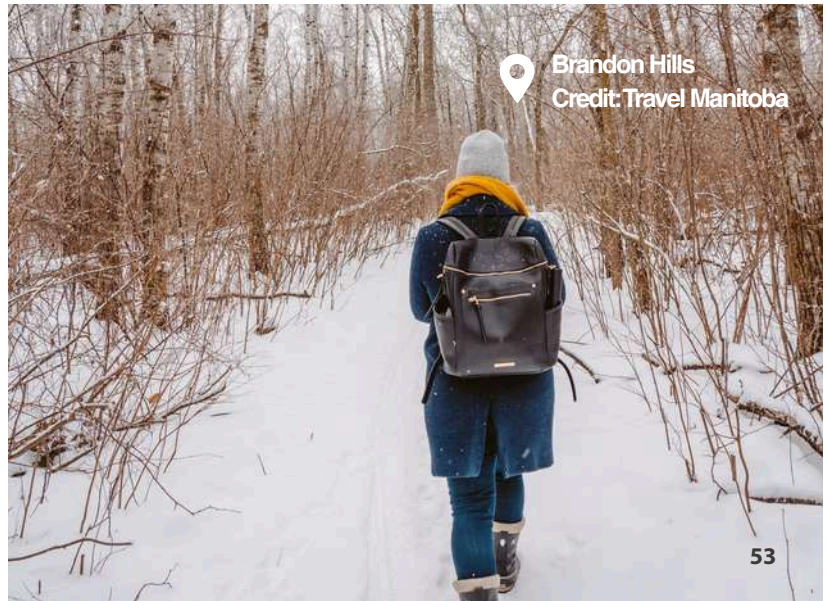


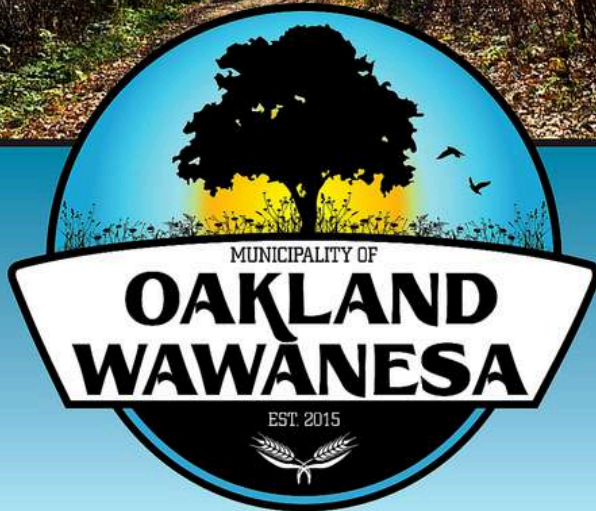
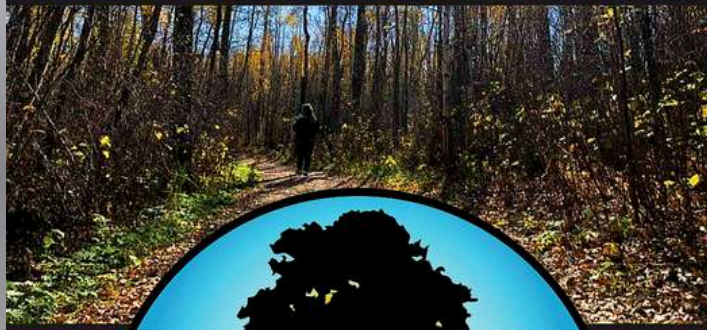
Tucked away in the scenic countryside of the RM of Rosedale, Big Valley Park is one of Southwest Manitoba's hidden natural gems. Formed by glacial meltwater during the last ice age, this striking valley features rolling shale hills, winding spring-fed creeks, lush birch trees, and breathtaking prairie views. Popular year-round for hiking, exploring, photography, camping, and winter tobogganing, Big Valley offers visitors a peaceful escape into nature and a chance to experience the rugged beauty of Manitoba's landscape. If you're seeking outdoor adventure or a quiet place to reconnect with nature, Big Valley is a destination worth discovering!

ROAM THE REGION

PEACEFUL PRAIRIE PATHS, FORESTED ESCAPES AND BREATHTAKING VALLEY VIEWS - THE REGION OFFERS ADVENTURE FOR EVERY SKILL LEVEL

Explore winding trails through rolling hills, discover hidden lookouts, and reconnect with nature in some of Manitoba's most scenic landscapes. Whether you're seeking a relaxing nature walk, a family-friendly outing, or a full day of outdoor adventure, the region's trails invite visitors to slow down, breathe deep, and experience the beauty of Westman one step at a time.





106 Fourth Street, Wawanesa MB
Phone (204) 824-2666
adminassist@oakland-wawanesa.ca
www.oakland-wawanesa.ca

SHAMROCK CENTRE

The Recreation Destination of SouthWest Manitoba.

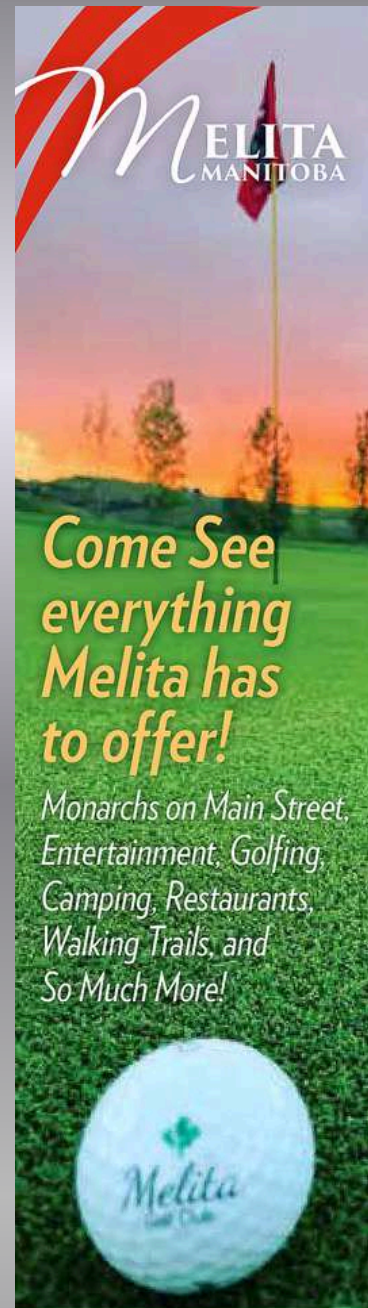
Shamrock Centre is a 78,000 sq. ft. state of the art facility that boasts a Community Hall, Skating Rink, Lounge, Six Lane Bowling Alley, Weight Room/Fitness Centre, Boardroom, Canteen and Kitchen plus much more.

725 Broadway Avenue
Killarney, MB

Phone 1-204-523-8920
Fax 1-204-523-8349

General Manager:
Liana Smith
gm@shamrockcentre.ca

Recreation Director:
Mandy Alexander
admin@shamrockcentre.ca



204-522-3413
MelitaMB.ca



WASKADA MUSEUM

43 Railway Ave
204-673-2401

Open July & August

Monday – Friday
9:30am to 4:00pm
Saturday & Sunday
1:00pm to 4:00pm



Visit the childhood home of one of Manitoba's most celebrated and beloved authors.

312 1ST AVE
NEEPAWA

margaretlaurencehome.ca

prairie GATEWAY

ELKHORN VIRDEN KENTON tourism



Scan Here to see our
2026 Tourism Guide!

Eat
Shop
Stay
Explore

prairiegatewaytourism.ca

GO ABOVE AND BEYOND!

At The Commonwealth Air Training Plan Museum
A NATIONAL HISTORIC SITE

UN SITE HISTORIQUE NATIONAL

Au Musée de la Formation Aérienne du Commonwealth

AU-DESSUS DE LA MÊLÉE!



Brandon Municipal Airport 204.727.2444
Aéroport municipale de Brandon 204.727.2444
www.airmuseum.ca

EXPERIENCE HISTORY WITH A BANG!

At the RCA Museum

CANADA'S NATIONAL ARTILLERY MUSEUM
LE MUSÉE NATIONAL DE L'ARTILLERIE DU CANADA

Au Musée de L'ARC

FAITES DE L'HISTOIRE AVEC UN BANG!



CFB Shilo 204.765.3000 ext. 3570
BFC Shilo 204.765.3000 poste 3570
www.rcamuseum.com

Visit Manitoba's star attraction Military Museums.
Visitez les Attractions Étoiles des Musées Militaires au Manitoba.



Scan QR code
for golf courses!



Hit the Links



Minnedosa Golf & Country Club
Credit: Sandy Black



Spruce Woods Mini Golf
Credit: Sandy Black

TEE OFF IN WESTMAN

**UNFORGETTABLE GOLFING EXPERIENCES
FOR PLAYERS OF EVERY SKILL LEVEL**

Whether you're chasing a championship-calibre round, enjoying a relaxed afternoon on the links, or planning a golf getaway with friends, the region's beautiful courses combine challenging play with stunning natural landscapes. Surrounded by wide-open skies, peaceful lakes, and welcoming communities, golfing in Westman is more than just a game - it's a chance to unwind, explore, and enjoy the outdoors one swing at a time.

Nestled in the scenic Little Saskatchewan River valley, Minnedosa Golf & Country Club is one of Manitoba's most picturesque golfing destinations. This beautiful 18-hole course combines rolling terrain, dramatic elevation changes, and breathtaking valley views to create a memorable experience for golfers of all skill levels. Alongside exceptional golf, visitors can enjoy a welcoming clubhouse, pro shop, licensed lounge, and tournament facilities - making it a must visit stop for both casual players and avid golf enthusiasts.



Boissevain Golf Club
Credit: Sandy Black



WASKADA PARK

9 HOLE GOLF & DISK COURSE

12 FULL-SERVICE CAMPGROUND SITES WITH ACCESSIBLE SHOWER FACILITY

PLAY STRUCTURE

WALKING PATH

OUTDOOR EXERCISE EQUIPMENT

PICNIC AREA

MINI GOLF COURSE



(204)673-2401



Clear Lake
GOLF COURSE

Situated in Riding Mountain National Park The Clear Lake Golf Course remains one of the most unique and beautiful courses in Manitoba.

To book tee times call **204-848-4653** or visit clearlakegolfcourse.com



Coming Soon to
Brandon & Westman
October 2026

PRAIRIE ROVERS

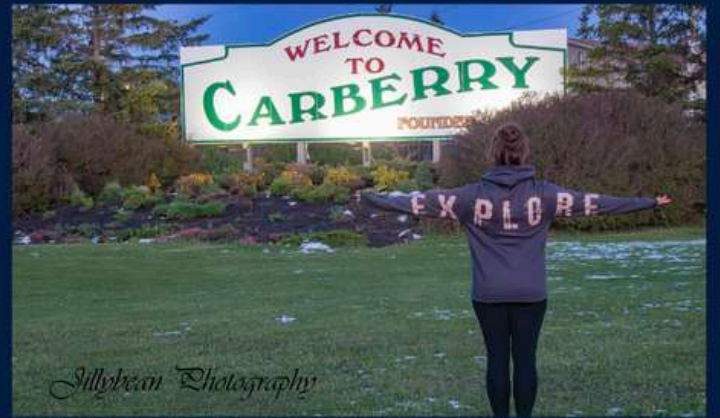
Local tour guide bus, themed day packages, events, and experiences.

Family friendly
we make finding things to do for fun, social, easy, and memorable.

Calendar of events TBA found at prairierovers.ca

Contact [owner@prairieovers.ca](mailto:owner@prairierovers.ca) for questions.

Follow **Prairie Rovers** on FB and Insta for updates.



Sillybean Photography

Voted one of the friendliest towns in Canada, our businesses and residents would love to welcome you to Carberry. From our historical downtown to our modern recreation facilities, The Museum & Gingerbread House, the Annual Fair & Races, Golf & Country Club and the beautiful Spruce Woods Provincial Park, there is lots to see and do.



Sillybean Photography

Carberry

DISCOVER. GROW. BELONG.



www.townofcarberry.ca



Sillybean Photography

Prairie View Municipality

**SOMETHING
FOR EVERYONE**

myprairieview.ca

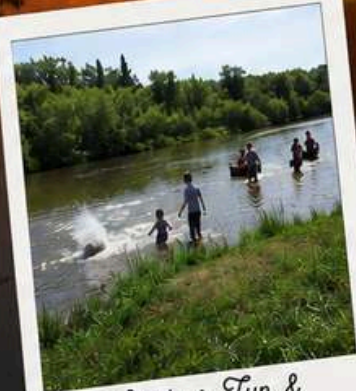
**Golf
Hiking
Skiing
Tennis
Lakes
Beaches
Biking Trails
Campgrounds
Museums**



*Things To
Do Now*



*Playgrounds, Beach
and Outdoor Pool*



*Outdoor Fun &
Exploring*

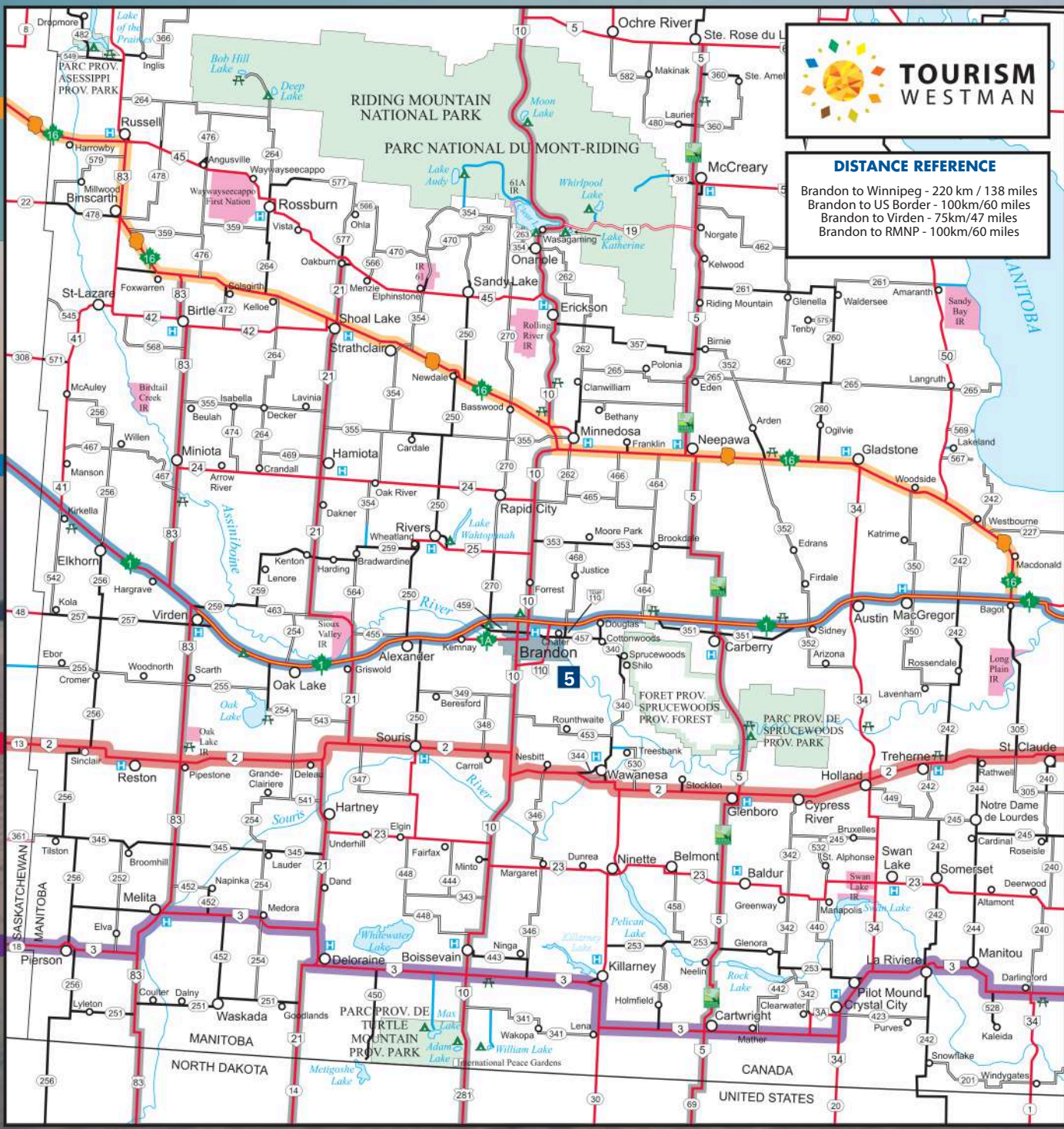


*Wakpa Tanka Lookout
and Trails*

**BIRTLE
MINIOTA
FOXWARREN
BEULAH
SOLSGIRTH
CRANDALL
ISABELLA
ARROW RIVER**



DISTANCE REFERENCE
Brandon to Winnipeg - 220 km / 138 miles
Brandon to US Border - 100km/60 miles
Brandon to Virden - 75km/47 miles
Brandon to RMNP - 100km/60 miles





Map of Manitoba's Southwest


- 1 BOUNDARY TRAIL
HIGHWAY#3
- 2 RED COAT TRAIL
HIGHWAY#2
- 3 TRANSCANADA TRAIL
HIGHWAY#1
- 4 YELLOWHEAD HIGHWAY
HIGHWAY#16
- 5 CITY OF BRANDON
- MAJOR NORTH/
SOUTH ROUTES

LEGEND


PROVINCIAL TRUNK HIGHWAYS


Multilane..... 


2 Lane, Paved..... 



Gravel..... 



PROVINCIAL ROADS


2 Lane, Paved..... 

Gravel..... 


Other Roads..... 


Trans Canada Highway  Provincial Trunk Highway 


Yellowhead Route  Provincial Road 

Parks Route 

SYMBOLS

Campsite..... 

Government Picnic Site / Wayside Park..... 

Hospital..... 

0 5 10 15 20 25
kilometres

COLOUR

YOUR FAVORITE WESTMAN ROADSIDE ATTRACTIONS!

FUN & FREE COLOURING PAGES ONLINE!



PRINT
AT HOME



FUN FOR
ALL AGES



SCAN ME

DOWNLOAD.
PRINT.
COLOUR.
REPEAT!